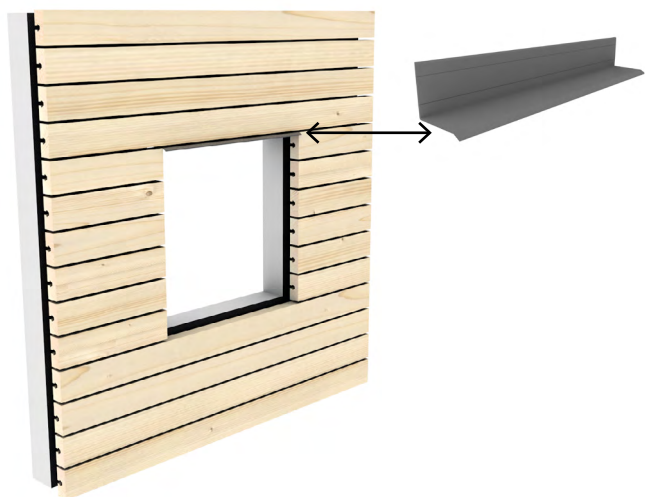


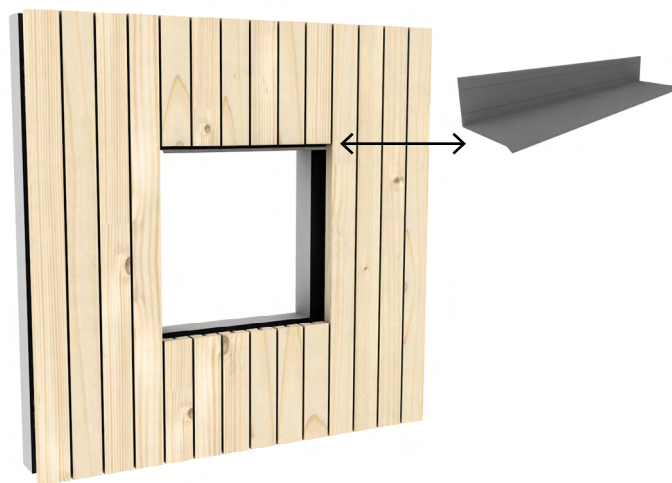
DRIP EDGE - 45 MM & 65 MM

Use: To prevent water infiltration and protect the underlying structure.

DRIP EDGE 45





DRIP EDGE 65

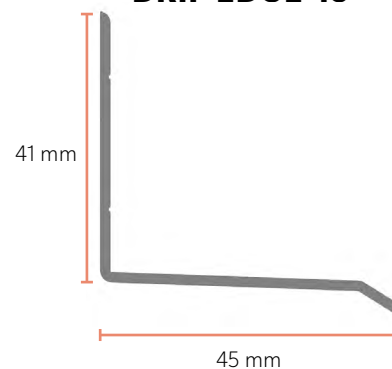


TECHNICAL CHARACTERISTICS

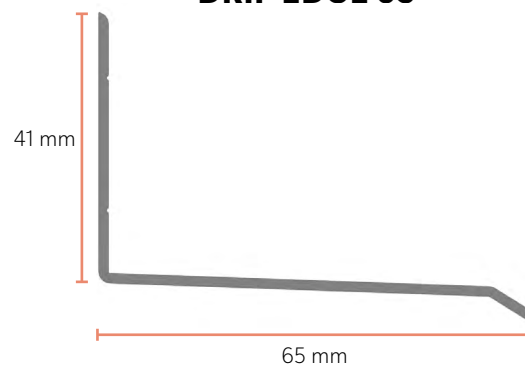
Material	Aluminium 6060T66
Mass	45 mm = 0.32 kg/m
	65 mm = 0.46 kg/m
Colour	RAL 7016

Article	Article ref	Description	Packing
	2994	Drip edge 45	4 m rail
	2993	Drip edge 65	4 m rail

DRIP EDGE 45



DRIP EDGE 65



Application

An easy-to-install aluminium profile, the drip edge is designed to prevent water from entering the building. Designed to slope outwards to help water drain away from the building structure, the drip edge acts as a protective barrier, diverting rainwater as it runs down the façade, preventing it from seeping behind the cladding.

In addition to ensuring the watertightness of your building's wall, these finishing profiles also add an aesthetic dimension to your construction.



Compatibility

Drip Edge 45

Compatible with all types of cladding up to a 40 mm thick in relation to the façade

Drip Edge 65

Compatible with all types of cladding up to a 60 mm thick in relation to the façade

Installation



1. Position the drip edge along the façade. Make sure it is horizontal, using a level or reference surface.
2. Secure the drip edge with screws suited to the substrate.

Note: If a rain screen is used, it must cover the side of the drip edge that is fixed to the façade.

