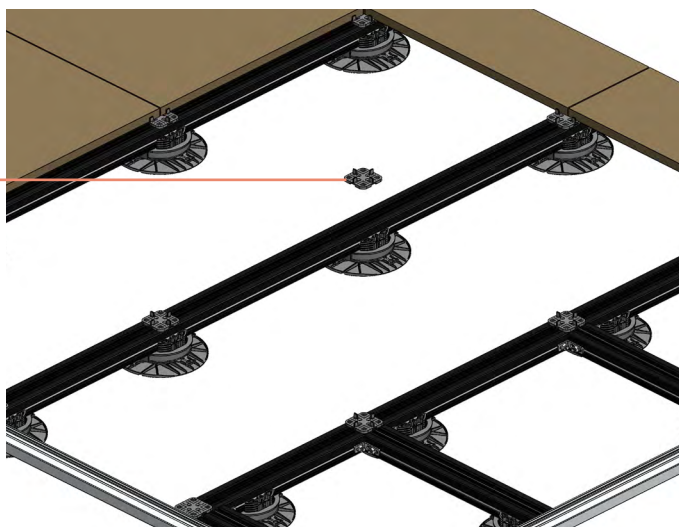
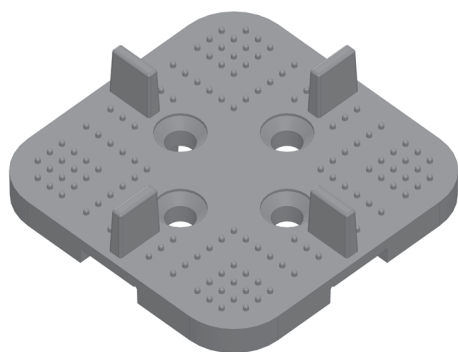
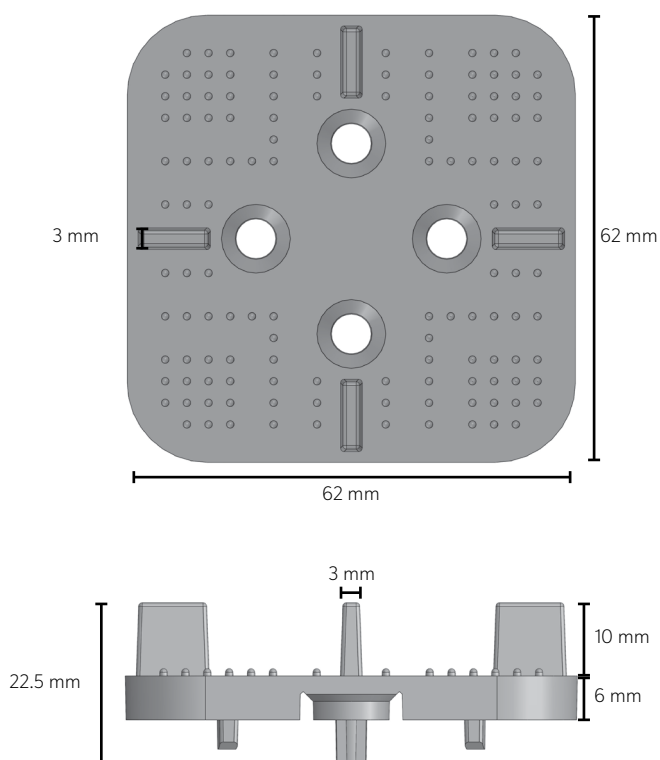


## SLAB SUPPORT



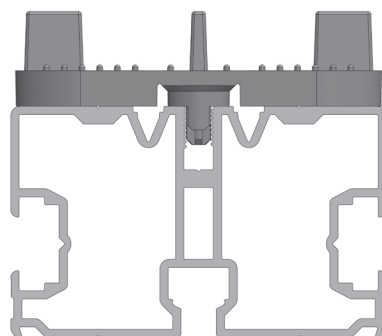
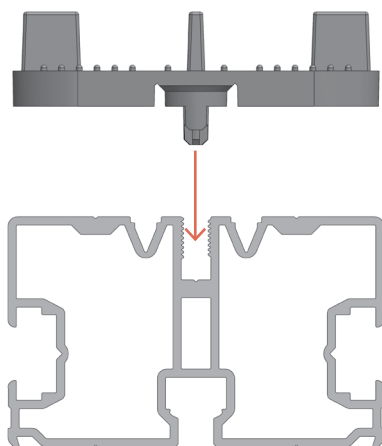
Description	Reference	Packing
Slab support for UR rail line	1494	Box of 100 pcs

### SLAB SUPPORT DIMENSIONS

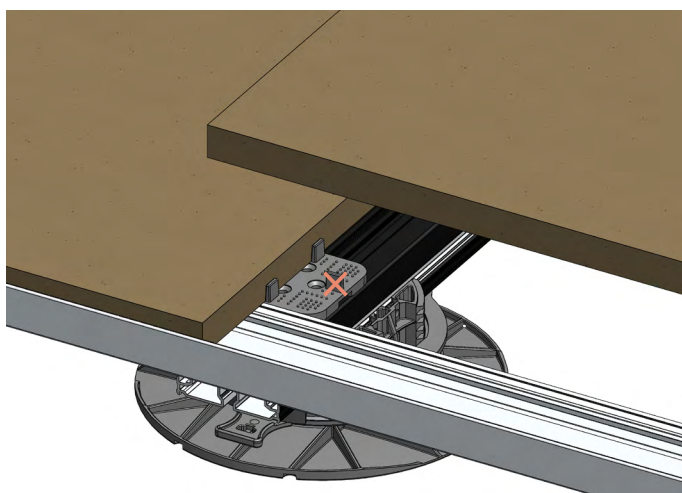


### TECHNICAL CHARACTERISTICS

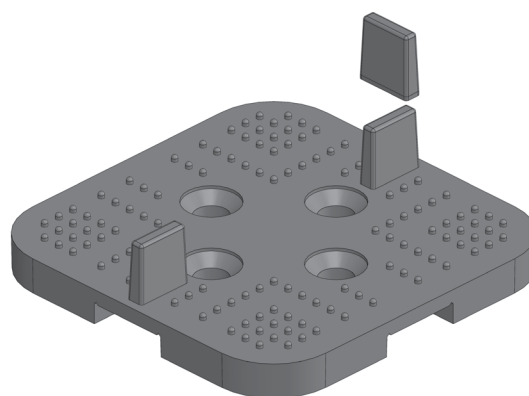
Material	Polypropylene + 20% talc
Density (kg/m <sup>3</sup> )	1050
Colour	Black
Tensile strength (MPa)	24
Fusion temperature (C°)	160-170
Tensile modulus (MPa)	2200
Weight	15.62 g



Position the slab support in the central groove of the rail; it is not necessary to screw the slab supports in place.



If necessary, the tabs on the slab support can be broken off with pliers.



If necessary for the installation, scored snap lines are present under the slab support.

In this case, the slab support should be secured to the rail using a M5x12 countersunk screw (ref. 1241).

